



Electronic Health Library of British Columbia

2017

Year in Review

Contents

Message from the Chair	3
eHLbc Members Map	4
Highlights of 2017	5
Focus on Value	6
Spotlight on Northern Health	7
Strategic Directions	8
The Year Ahead	8
Appendix A: Financials	9
Appendix B: Licensed Resources	10
Appendix C: Organizational Overview	11



Electronic Health Library of BC: Year in Review 2017

Photo on page 3 courtesy of the BC Cancer Agency

Photos on pages 8 & 10 courtesy of Trinity Western University

Connecting BC's students, researchers, and professionals to trusted health information.

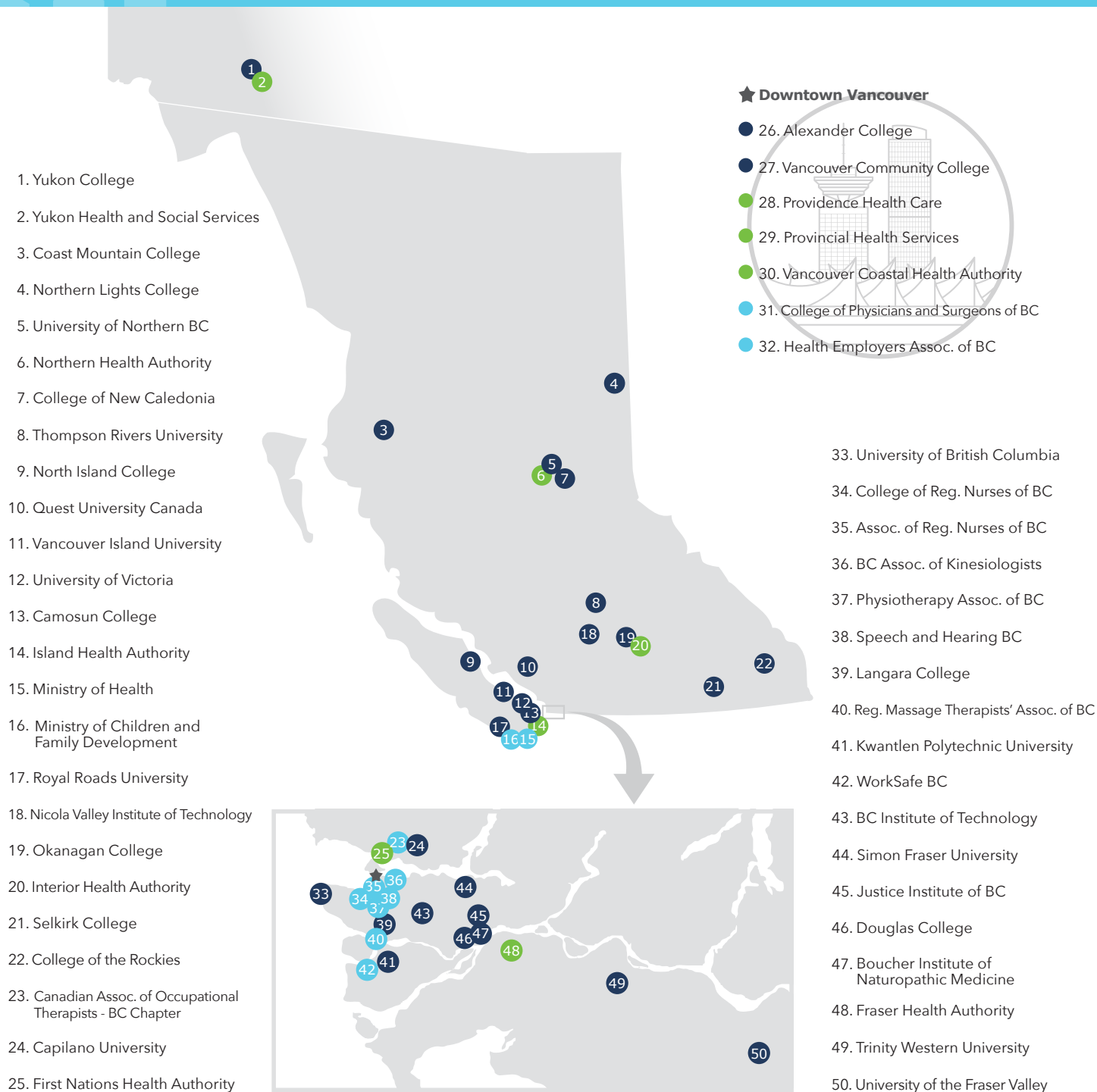
“eHLbc provides users – health professionals, researchers, learners, educators, and government analysts – with the tools they need to discover the best evidence with which to make decisions, succeed in their studies, perform research, and deliver excellent patient care.

I'm delighted to share eHLbc's membership growth and licensing successes in 2017 and the myriad ways libraries and communities benefit from eHLbc's multi-sector collaboration.”

Antje Helmuth
Chair, eHLbc Steering Committee
Ministry of Health / Ministry of
Children and Family Development



Electronic Health Library of BC - Members



KEY



Post-Secondary Institution



Health Authority



Government/Health Professional Organization

Highlights of 2017

Renewed Core Suite of Resources

Negotiated the best price for the eHLbc Core Suite, with a total cost of \$8.4 million over four years (see Appendix B)

Achieved savings of 20-100% on EBSCO, Ovid/Wolters Kluwer Health, and APA products

Maintained low annual increases of just 4% – well below the typical 10% publisher's charge for science, technology, engineering, and math (STEM) products

Refreshed Communication Tools

Updated eHLbc website to improve security, functionality, and general look and feel

Utilized eHLbc member feedback, user testing, and sister consortium BC ELN migration to inform website design

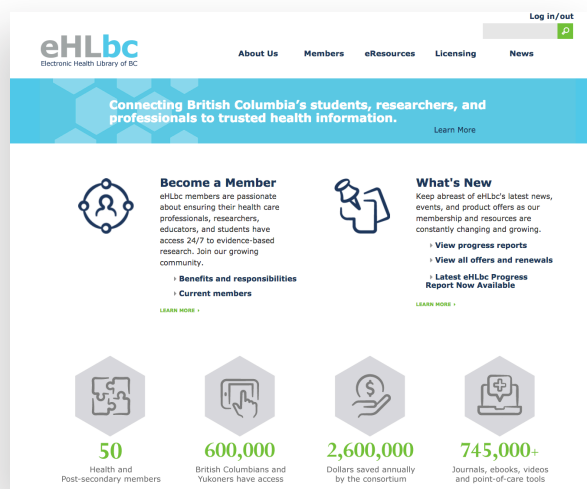
Renewed eHLbc logo to reflect consortial values of trustworthiness and equity

Welcomed Newest Member ARNBC

Grew eHLbc's membership to 50 organizations, an increase of 67% since eHLbc was founded

“We are excited to provide members with access to such a great resource of quality health information.”

Valerie St. John
Executive Director
Association of Registered Nurses of BC



Growing eHLbc means greater access across BC

eHLbc reaches well beyond public sectors.

Since eHLbc was launched, three private educational institutions – Alexander College, Boucher Institute of Naturopathic Medicine, and Quest University Canada – have joined the consortium. In addition, the number of professional health associations accessing eHLbc-licensed health resources has increased exponentially. Now private practice health care professionals in a number of fields have access to vital health information.

Focus on Value



50

health, post-secondary,
and government sector
members



67%

increase in membership
over eHLbc's 11 years as
a consortium



20-100%

discounts achieved on
Core Suite EBSCO, Ovid/
Wolters Kluwer, and APA
resources



4,600,000

people across British
Columbia and Yukon benefit
from their practitioners
having access to high quality
health research



\$5,083,600

saved each year through
central licensing and
coordination of the Core
Suite



24/7

access to evidence-based
research for professionals,
researchers, educators, and
students



500,000

learners, faculty,
researchers, and health
care professionals can
access health resources



\$5

for the price of a fancy
coffee, students and health
practitioners have access to a
full year of eHLbc resources



4%

low average annual
increase for the Core
Suite; far lower than the
industry average of 10%



4,000

full-text journals are available
through the Core Suite, and
many more through eHLbc
boutique licenses



740,000

evidence-based reviews
provide clinicians with the
best evidence to the most
commonly-asked questions



8,000

videos available in the areas
of counseling and therapy,
nursing, rehabilitation therapy,
and much more

Spotlight on Northern Health

Northern Health delivers quality care across Northern BC, serving approximately 300,000 people



Northern Health Mission Statement

Through the efforts of dedicated staff and physicians, in partnership with communities and organizations, we provide exceptional health services for Northerners.

Citizens and health practitioners across BC deserve the most reliable health information possible, whether living in an urban metropolis or a remote northern community. Fortunately, library services provided by Northern Health Authority ensure that practitioners, administrators, educators, and students – be they in Fort St. John, Dawson Creek, or Haida Gwaii – have access to a range of health information resources that support both education and practice.

Membership in eHLbc guarantees Northern Health Library access to core health resources at an affordable cost and with low annual price increases. Research articles, ebooks, and evidence-based reviews are all just a few clicks away thanks to eHLbc. The eHLbc Administrative Centre handles invoicing and license negotiations, freeing up library staff time to provide more face-to-face time with patrons.

“Last year in Northern Health, staff and clinicians conducted almost 25,000 database searches and downloaded over 5,000 full text articles from eHLbc licensed resources, demonstrating the demand for core clinical information to support evidence informed practices.”

Julie Creaser
Regional Manager, Library Services
Northern Health



Strategic Directions

This year eHLbc released its 2017-2022 Strategic Plan: <https://ehlbc.ca/about/about-us/strategic-plan>.
The consortium's strategic directions over the next five years are:



Maintain the
Core Suite of
Resources



Grow Collection
of Boutique
Resources



Empower and
Support eHLbc
Members



Develop
eHLbc's Affiliate
Membership



Optimize
Professional
Development

The Year Ahead

As a mature and stable organization, eHLbc is moving into a period of reflection and creative renewal. In the coming year, we will:

- Articulate, prioritize, and timeline strategic actions for the duration of the 2017-2022 Strategic Plan
- Conduct a Member Services Review to assess the effectiveness of current eHLbc member support, in preparation for 2019 environmental scan, evaluation, and implementation of new tools and approaches
- Refresh eHLbc's Terms of Reference to better reflect the consortium's maturity as an organization
- Develop and implement a revised eHLbc Communications Plan
- Publish customized video training tutorials for member support and troubleshooting



Trinity Western University

Financials

eHLbc Administration

Professional and administrative services are fully funded by members.

2017/18 Actual	
	Revenue
Carryforward	42,036
Full Member Fees	96,843
Affiliate Member Fees	8,085
Miscellaneous Revenue (prepayments, etc.)	9,257
Total	156,221
	Expenses
Coordination & Staffing	117,523
Web Migration	28,028
Administration / Communication / Governance	959
Technical Infrastructure	2,782
Total	149,292
Revenue - Expenses	6,929

eHLbc Licensing Initiatives

Flow-through finances for licensing activities.

2017/18 Actual	
	Revenue
Carryforward	143,275
Member Contributions	3,677,942
Affiliate Member Core Cost Contributions	35,759
Miscellaneous Revenue (prepayments, USD forward purchasing, etc.)	79,839
Total	3,936,814
	Expenses
Payments to Vendors (Core Suite & Boutique)	3,967,330
Total	(30,516)
Revenue - Expenses	(30,516)*

* Negative carryforward is the result of one late payment. When anticipated payment is received, carryforward will be ~175K. This carryforward is used for core suite subsidies over the following three years.

Licensed Resources

Core Suite of Resources

Biomedical Reference Collection: Comprehensive Edition
 CINAHL Complete
 EBSCO eBook Subscription Collection - Nursing ****New****
 Evidence-Based Medicine Reviews (EBMR)
 Lippincott Williams & Wilkins (LWW) Total Access Collection
 MEDLINE (Ovid)
 MEDLINE with Full Text (EBSCO)
 PsycARTICLES
 PsycINFO

Core
suite is
available
to all

The Core Suite consists of 4,000 full-text journals, 550 ebooks, 25 million bibliographic citations and abstracts, and 740,000 evidence-based reviews.

Boutique Resources

AgeLine
 AHFS Consumer Medication Information
 Alexander Street Press Video Online
 Alt HealthWatch
 Clinical Skills (Elsevier)
 Compendium of Pharmaceuticals and Specialties (CPS)
 Diagnostic and Statistical Manual of Mental Disorders (DSM-5 Library)
 DynaMed
 EBSCO Discovery Service (EDS)
 e-Therapeutics+ (now RxTx²)
 Health Source: Consumer and Nursing/Academic Editions
 Lippincott Williams & Wilkins (LWW) Joanna Briggs Institute (JBI) Book Collection
 Nursing Reference Center and Nursing Reference Center Plus
 Primal Pictures Anatomy TV
 Primal Pictures Upgrade 2016
 PsychiatryOnline Core and Premium
 SPORTDiscus Index and Full Text

Choose
boutique
resources as
budgets and
needs dictate



Trinity Western University

Organizational Overview



About Us

eHLbc is a multi-sector consortium comprised of 50 members.

eHLbc provides value through coordinated licensing and services. In total, eHLbc saves the system up to 90% in licensing costs and reaches approximately 500,000 users in British Columbia and the Yukon. eHLbc is housed at Simon Fraser University (SFU) where the BC Electronic Library Network (BC ELN) serves as Administrative Centre, providing the consortium with essential services, such as project management, negotiation expertise, and technical support.



Governance & Accountability

eHLbc is governed by Management and Steering Committees. All member organizations have a representative on the Steering Committee. The Management Committee is derived from the membership of the Steering Committee and provides leadership and direction.

Fueled by the principle of transparency, major financial decisions must receive initial approval from the Management Committee and final approval from the Steering Committee.



Strategic Direction

eHLbc's strategic planning process is consultative and driven by the grass roots support of member institutions. The eHLbc Administrative Centre reports on its progress achieving the consortium's strategic goals in the semi-annual Administrative Centre Progress Reports and annual Year in Review.

Administrative Centre

Jennifer Bancroft
Anita Cocchia
Korinne Hamakawa
Sunni Nishimura
Leigh Anne Palmer
Vaughn Postgate

For information about membership, see [Membership Pledge](#)

Management Committee as of December 2017

Antje Helmuth, Chair

Ministry of Health / Ministry of Children and Family Development
Health Sector

Mary Anne Guenther Vice-Chair

North Island College
Post-Secondary Sector

Dawne Bohme

Boucher Institute of Naturopathic Medicine
Affiliate Sector

Julie Creaser

Northern Health Authority
Health Sector

Todd Mundle

Kwantlen Polytechnic University
Post-Secondary Sector

Cathy Rayment

Provincial Health Services Authority
Health Sector

Debbie Schachter

Capilano University
Post-Secondary Sector