



Electronic Health Library of BC

Year in Review 2018

eHLbc
Electronic Health Library of BC

Table of Contents

- 3 Message from the Chair
- 3 2018 Highlights
- 4 Value of Collaboration
- 5 Strategic Planning
- 6 The Year Ahead
- 6 Spotlight on New Product: JBI
- 7 Financials
- 8 Appendix A: Learning Resources
- 9 Appendix B: Member Map
- 10 Appendix C: Organization Overview



Message from the Chair



Mary Anne Guenther
Chair, eHLbc
Management Committee
North Island College

Since 2006, eHLbc has provided equitable access to a Core Suite of journal articles, evidence-based reviews, and abstracts to the health and academic sectors of the province. In 2018, the Core Suite was renewed for a four-year term with low annual increases; by working collaboratively, savings are passed on to members and stable pricing means organizations can budget accordingly. eHLbc also added a new resource to its boutique offerings: Ovid's JBI Database, Journal, and Tools, and achieved better discounts on additional licenses by partnering with sister consortia. In addition to growing eHLbc's collection of boutique resources, eHLbc supported and empowered members through customized reports, updated website, and one-on-one orientations for new and interested staff. Finally, a highlight for me this year was the in-person facilitated Strategic Action Planning session; Management Committee members rolled up their sleeves to come up with actionable priorities for the consortium.

I'm proud of eHLbc's growth and successes as reflected in this report, and I look forward to the consortium's future!

2018 Highlights

Finalized Core Suite negotiations for a four-year term, maximizing cost savings for members; released the *Case for Renewal 2018-2022* and confirmed all members renewed their commitment to eHLbc's Core Suite.

Produced eHLbc's [Membership Pledge 2018-2022](#), outlining the benefits and responsibilities of membership in the consortium; reaffirmed 50 full and affiliate members' commitments to eHLbc's vision, goals and responsibilities of membership.

Offered eHLbc members a new boutique license: Ovid's *JBI Database, Journal, and Tools*; negotiated pricing for EBSCO's *DynaMed Plus*, in addition to renewal pricing for *DynaMed*; partnered with the BC Electronic Library Network and Consortia Canada to achieve greater group discounts for *AgeLine*, *PsychiatryOnline*, and *DSM-5 Library*.

Hosted a facilitated, in-person Management Committee Strategic Action Planning meeting to strategize and prioritize eHLbc work for the coming 2-3 years.

Detailed Progress Reports of the year's achievements available at: <https://ehlbc.ca/about/ehlbc-reports/progress-reports>

Value of Collaboration

50

**eHLbc
Members**



29
post-secondary
institutions



12
government/health
professional
organizations



9
health
authorities



collaborate to generate
incredible savings via the
Core Suite*



20% - 100%
discounts
achieved



2.7 million
in savings
each year



740,000+
journals, ebooks,
videos, and more
available

**so that
across
British
Columbia...**



**~500,000 students, faculty members, researchers, and
professionals have 24/7 access to trusted health information.**

*See appendix A



Spotlight on Boutique License: Primal Pictures

**Primal Pictures is a comprehensive
anatomical resource that includes:**



- 3D anatomical structures
- Interactive anatomy models
- Cross sectional models
- Physiology animations
- Anatomy videos



20

**eHLbc
subscribers**

**Members get a
discount of**

95%

**Primal Pictures
Upgrade 2016**

Strategic Planning

On October 1, 2018 the eHLbc Management Committee held a facilitated Strategic Action Planning session. The group was led through a series of exercises meant to revisit and reflect on existing goals, and identify new ones that align with the current Strategic Plan. The activities were participatory; committee members collaboratively discussed and brainstormed actions that could advance the strategic plan. The outcome? eHLbc now has a clear set of priorities to focus on in the coming years.

Attendees also took some time at this meeting to celebrate Ruth Rochlin who retired from Interior Health Authority in late September. Ruth has been an active member of eHLbc from its inception. Her passion for equitable access to health information and support for eHLbc has been invaluable to the consortium.



eHLbc Management Committee and Administrative Centre Staff



Ruth Rochlin

The Year Ahead

Looking to the year ahead, eHLbc will strive to accomplish the goals laid out in the Strategic Plan by:

- 1 Empowering and supporting members through reviewing and refreshing Terms of Reference.
- 2 Increasing awareness of eHLbc's Core Suite by developing communications that clearly highlight the value of the Suite.
- 3 Hosting an "unconference" for library staff and vendors to demonstrate and showcase their use of existing or potential boutique resources.

Spotlight on JBI

In 2018, eHLbc added the complete JBI Package to its suite of boutique resources on offer. This is a unique combination from the Joanna Briggs Institute (JBI), available via Ovid, of the EBP Database, JBI Database of Systematic Reviews and Implementation Reports, and set of tools that help nurses, physicians, practitioners, and healthcare managers provide patient care based on the best available evidence. This collection is made available to eHLbc members through its collaboration with Consortia Canada.

"The Joanna Briggs Institute (JBI) EBP Database allows the library to offer staff, from our Policy Research area especially, an additional evidence-informed resource to aid with regulatory policy development, and more evidence-informed resources can only be a good thing."

*Carol MacFarlane, Librarian, Research and Copyright
British Columbia College of Nursing Professionals*



Financials

eHLbc Administration

Professional and administrative services are fully funded by members

2018/19 Actual

	Revenue
Carryforward	6,929
Full Member Fees	111,273
Affiliate Member Fees	9,360
Miscellaneous Revenue (prepayments, etc.)	8,267
Total	135,829
	Expenses
Coordination & Staffing	116,354
Strategic Action Priorities Development	3,495
Administration / Communication / Governance	941
Technical Infrastructure	1,903
Total	122,693
Revenue - Expenses	13,136

Licensing Programme

Flow-through finances for licensing activities

2018/19 Actual

	Revenue
Carryforward	(30,516)
Member Contributions	4,016,728
Affiliate Member Core Cost Contributions	38,460
Miscellaneous Revenue (prepayments, etc.)	75,849
Total	4,100,521
	Expenses
Payments to Vendors (Core Suite & Boutique)	4,008,055
Total	4,008,055
Revenue - Expenses	92,466*

* 18/19 Carryforward (\$92,466) is the result of late payments of ~\$87K. Without late payments, anticipated carryforward is ~\$179K. This includes Affiliate Member Core Cost Contributions for 2018/19, and subsidies for 2019/20 and 2020/21, plus prepayments of ~\$76K.



Justice Institute of British Columbia learners

Licensed Resources

Core Suite of Resources

Biomedical Reference Collection: Comprehensive Edition	Lippincott Williams & Wilkins (LWW) Total Access Collection
CINAHL Complete	MEDLINE (Ovid)
EBSCO eBook Subscription Collection - Nursing	MEDLINE with Full Text (EBSCO)
Evidence-Based Medicine Reviews (EBMR)	PsycARTICLES
	PsycINFO

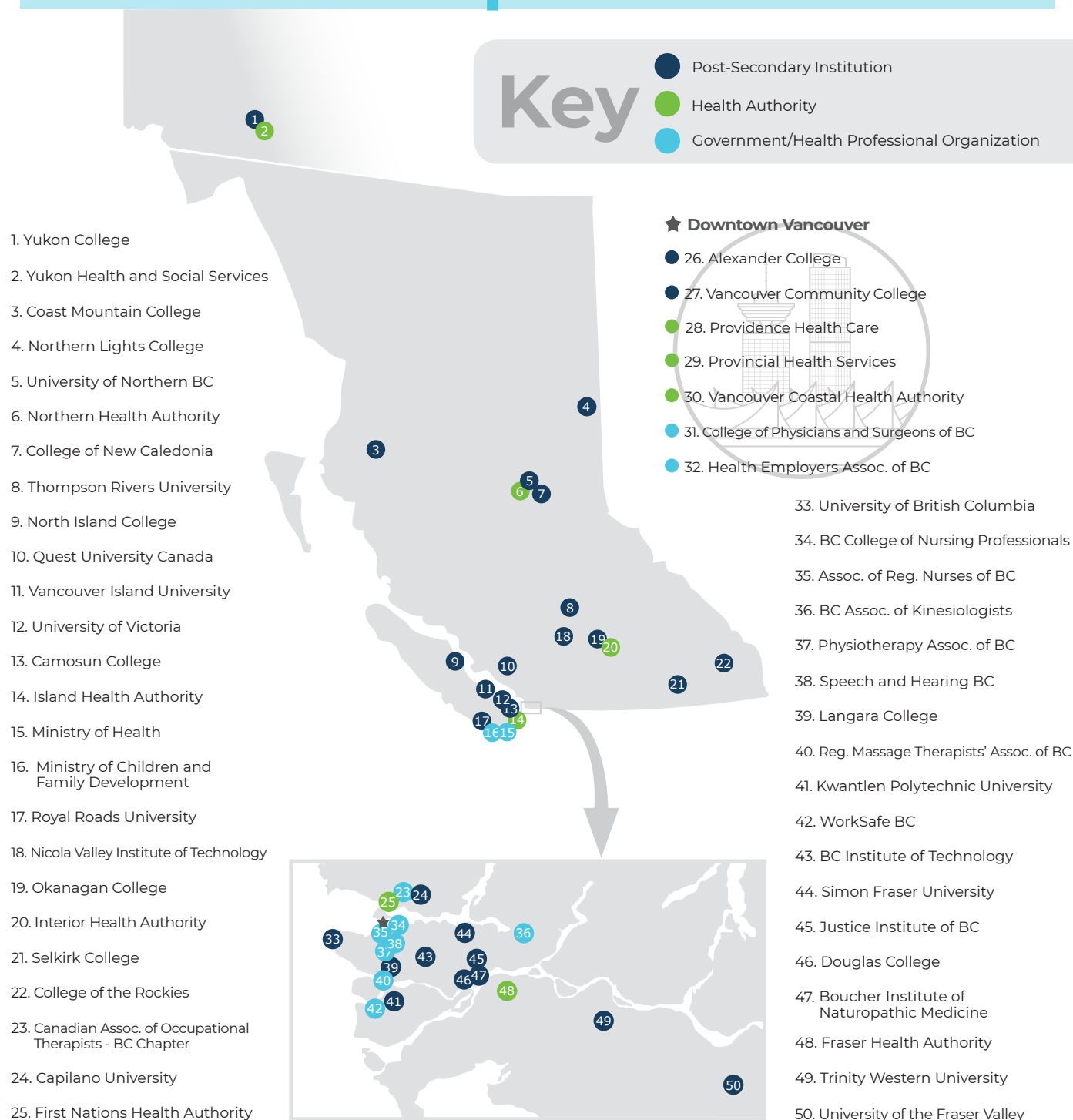
Boutique Resources

AgeLine	Health Source: Consumer and Nursing/ Academic Editions
AHFS Consumer Medication Information	Joanna Briggs Institute Database, Journal, and Tools Package
Alexander Street Press Video Online	Lippincott Williams & Wilkins (LWW) Joanna Briggs Institute (JBI) Book Collection
Alt HealthWatch	Nursing Reference Center and Nursing Reference Center Plus
Clinical Skills (Elsevier)	Primal Pictures
Diagnostic and Statistical Manual of Mental Disorders (DSM-5 Library)	PsychiatryOnline Core and Premium
DynaMed/DynaMed Plus	SPORTDiscus Index and Full Text
EBSCO Discovery Service (EDS)	

The Core Suite is available to all eHLbc Members and consists of 4,000 full-text journals, 550 ebooks, 25 million bibliographic citations and abstracts, and 740,000 evidence-based reviews.

Members choose boutique resources as budgets and needs dictate.

Member Map



Connecting British Columbia's students, researchers, and professionals to trusted health information.

Organization Overview

About eHLbc

eHLbc is a multi-sector consortium comprised of 50 members. eHLbc provides value through coordinated licensing and services. In total, eHLbc saves the system up to 90% in licensing costs and reaches approximately 500,000 users in British Columbia and the Yukon. eHLbc is housed at Simon Fraser University (SFU) where the BC Electronic Library Network (BC ELN) serves as Administrative Centre, providing the consortium with essential services, such as project management, negotiation expertise, and technical support.

Governance

eHLbc is governed by Management and Steering Committees. All member organizations have a representative on the Steering Committee. The Management Committee is derived from the membership of the Steering Committee and provides leadership and direction.

Fueled by the principle of transparency, major financial decisions must receive initial approval from the Management Committee and final approval from the Steering Committee.

Strategic Direction

eHLbc's strategic planning process is consultative and driven by the grass roots support of member institutions. The eHLbc Administrative Centre reports on its progress achieving the consortium's strategic goals in the semi-annual Administrative Centre Progress Reports and annual Year in Review.

Management Committee

as of December 2018

Chair

Mary Anne Guenther
North Island College
Post-Secondary Sector

Vice-Chair

Julie Creaser
Northern Health Authority
Health Sector

Post-Secondary Sector Representatives

- ▶ Aleteia Greenwood
University of BC
- ▶ Trish Rosseel
Douglas College

Health Sector Representatives

- ▶ Kenneth McFarlan
Island Health Authority
- ▶ Cathy Rayment
*Provincial Health
Services Authority*

Affiliate Sector Representative

- ▶ Dawne Bohme
*Boucher Institute of
Naturopathic Medicine*

Administrative Centre

Jennifer Bancroft (*on Parental Leave*)
Anita Cocchia
Korinne Hamakawa
Sunni Nishimura
Leigh Anne Palmer
Vaughn Postgate